

## Tarrant Appraisal District Web Site Analysis

Web Log Analysis Monthly Report January 2008

Report Range:01/01/2008 00:00:00 – 01/31/2008 23:59:59



This report was generated by WebTrends(R) Friday February 1, 2008 – 08:16:34  
Final report conversion by WebTrends Document Utility, Version 6.1a (build 423)

*(c) 1996–2004 NetIQ Corporation. All rights reserved.*

# Table of Contents

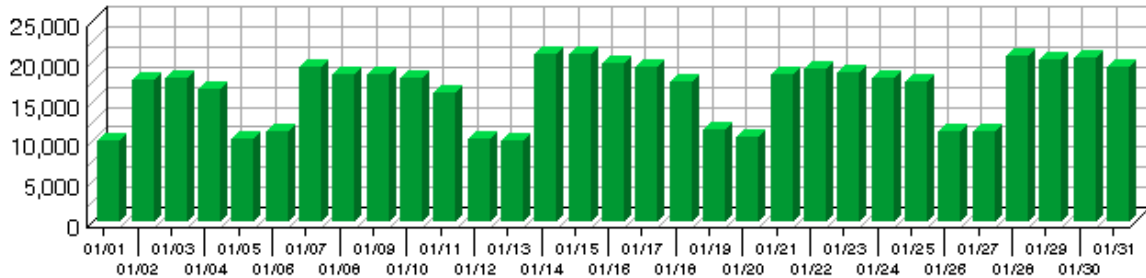
Overview Dashboard.....	1
Visitors Dashboard.....	3
Top Visitors.....	7
New vs. Return Visits.....	9
Visitors by Number of Visits.....	11
Visitors Trend.....	13
Pages Dashboard.....	17
Top Pages.....	19
Files Dashboard.....	21
Most Downloaded Files.....	23
Navigation Dashboard.....	25
Top Entry Pages.....	27
Top Entry Files.....	29
Top Exit Pages.....	31
Single Access Pages.....	33
Top Paths Through Site.....	35
Activity Dashboard.....	37
Visits by Number of Pages Viewed.....	39
Visits by Day of the Week.....	41
Visits by Hour of the Day.....	43
Visit Duration by Visits.....	45
Visit Duration by Page Views.....	47



# Overview Dashboard

This displays key graphs and tables that provide an overview of the entire report. Click on the title of a graph or table to navigate to the corresponding page.

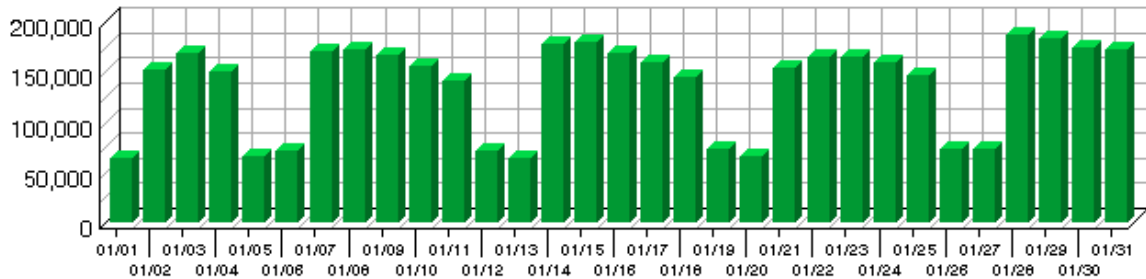
### Visits Trend



### Visit Summary

Visits	508,210
Average per Day	16,393
Average Visit Length	00:11:10
Median Visit Length	00:02:57
International Visits	0.00%
Visits of Unknown Origin	100.00%
Visits from Your Country: United States (US)	0.00%

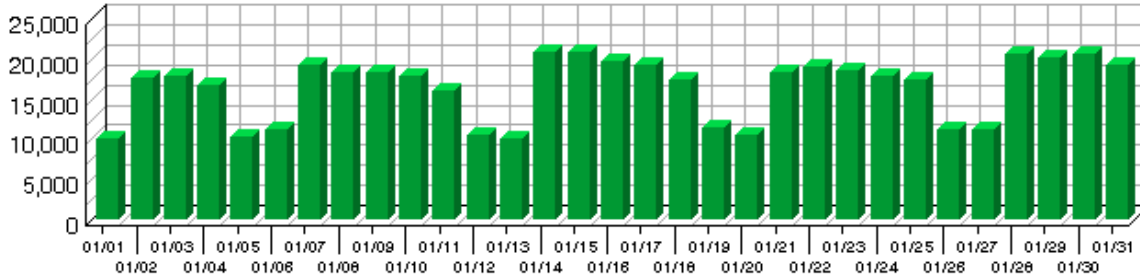
### Page Views Trend



### Page View Summary

Page Views	4,246,368
Average per Day	136,979
Average Page Views per Visit	8.36

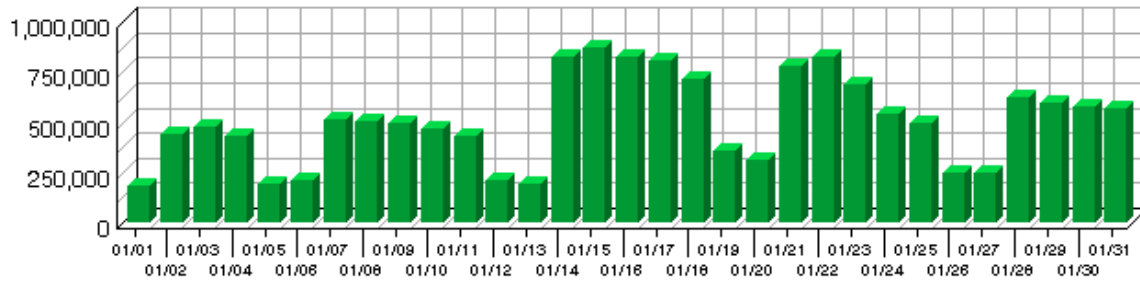
### Visitors Trend



### Visitor Summary

Unique Visitors	157,545
Visitors Who Visited Once	105,788
Visitors Who Visited More Than Once	51,757
Average Visits per Visitor	3.23

### Hits Trend



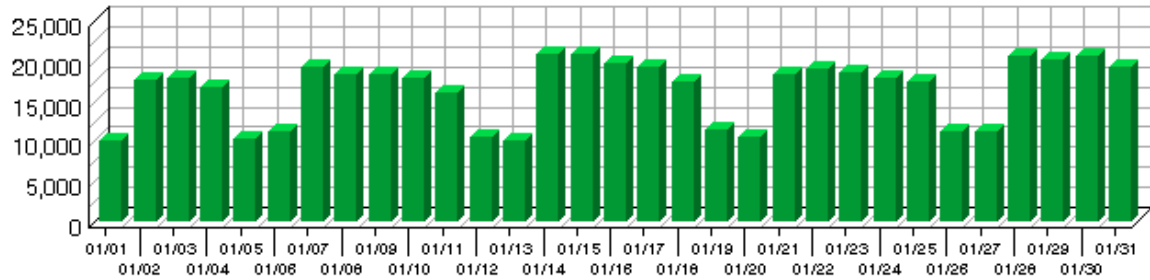
### Hit Summary

Successful Hits for Entire Site	15,652,416
Average Hits per Day	504,916
Home Page Hits	311,955

# Visitors Dashboard

This displays key graphs and tables that provide an overview of the Visitors chapter. Click on the title of a graph or table to navigate to the corresponding page.

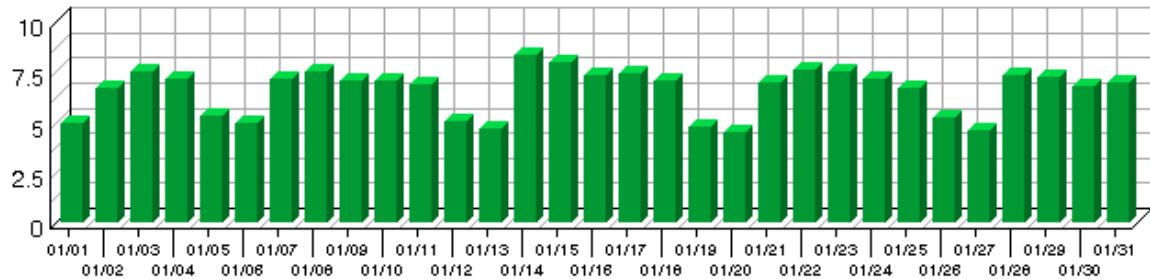
### Visitors Trend



### Visit Summary

Visits	508,210
Average per Day	16,393
Average Visit Length	00:11:10
Median Visit Length	00:02:57
International Visits	0.00%
Visits of Unknown Origin	100.00%
Visits from Your Country: United States (US)	0.00%

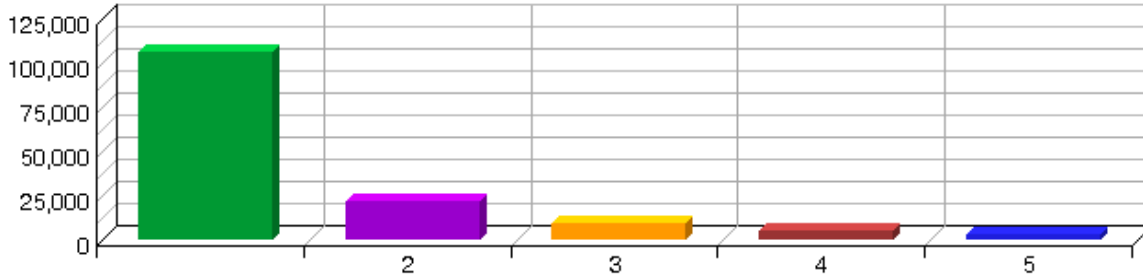
### Average Length of Visit Trend



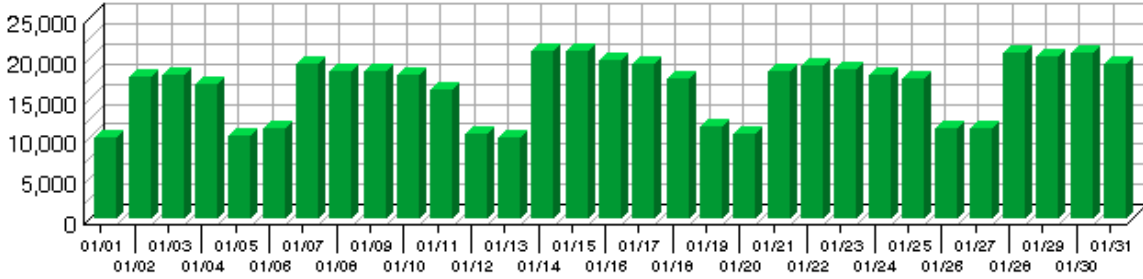
### Top Countries by Visits



**Visitors by Number of Visits**



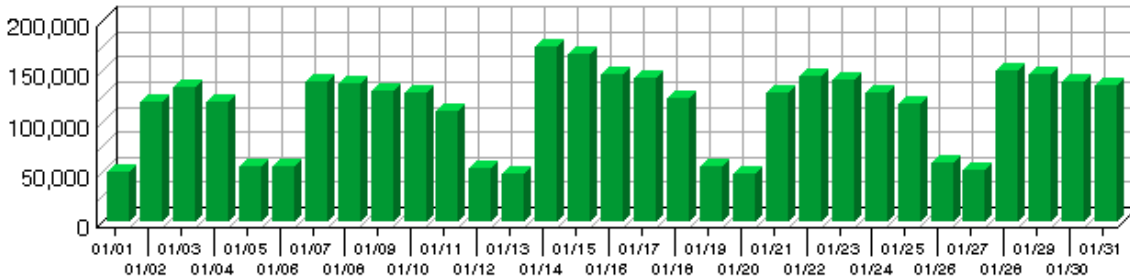
**Visitors Trend**



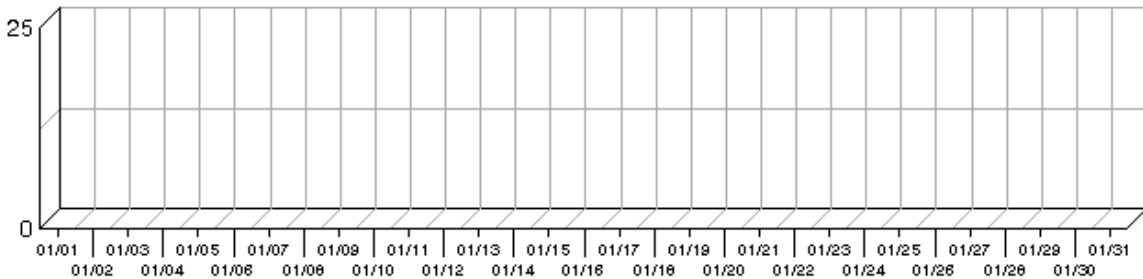
**Visitor Summary**

Unique Visitors	157,545
Visitors Who Visited Once	105,788
Visitors Who Visited More Than Once	51,757
Average Visits per Visitor	3.23

**Visitor Minutes Trend**



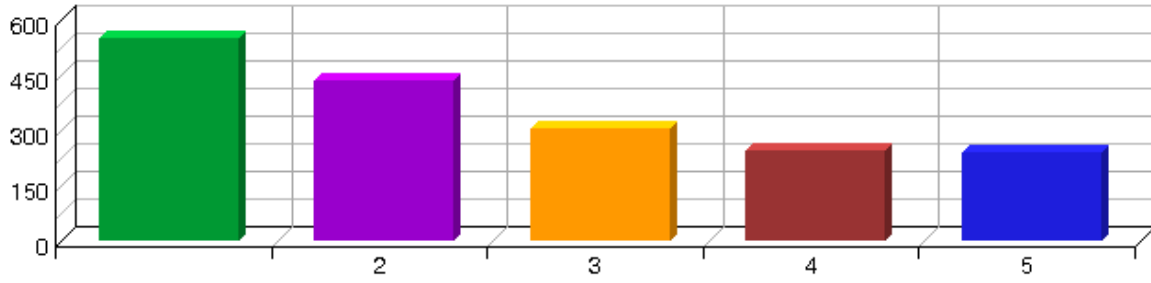
**First Time Visitors Trend**



**New vs. Return Visits**



**Top Visitors by Visits**



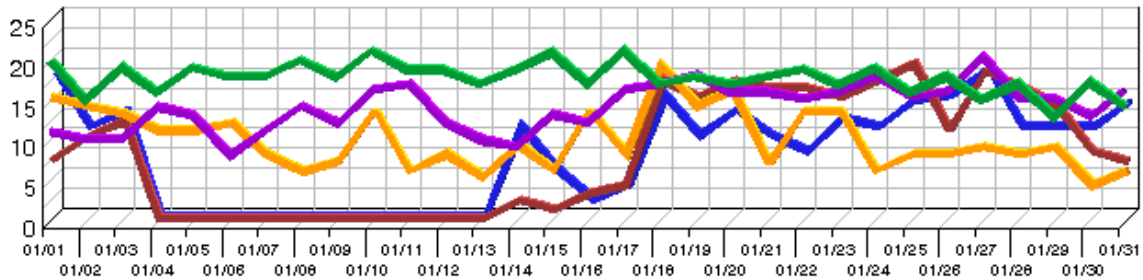


# Top Visitors

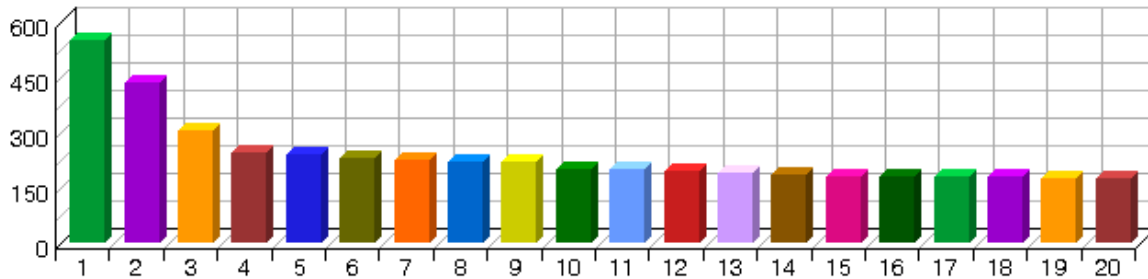
The threshold set for this section in the wtm\_wtx.ini file was reached. Results shown in tables and graphs do not reflect the entire contents of the log file(s).

This report identifies the IP address, domain name, or cookie of each visitor, and identifies the visitor's relative activity level on the site. If you use cookies to track visits, Reporting Center can differentiate between hits from different visitors with the same IP address.

**Top Visitors by Visits Trend**



**Top Visitors by Visits**



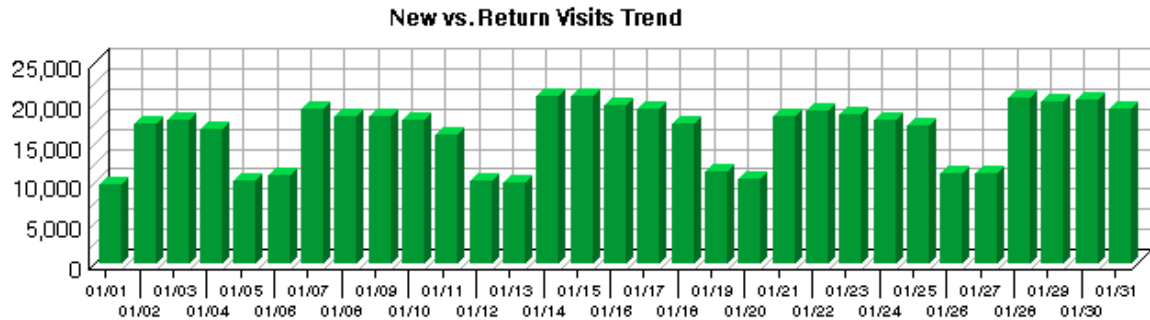
**Top Visitors**

	Visitor	Visits	%	Hits
1.	74.6.26.141_Mozilla/5.0 (compatible; Yahoo! Slurp; http...	552	0.11%	1,897
2.	12.181.197.100_Mozilla/4.0 (compatible;)	434	0.09%	1,810
3.	74.6.27.70_Mozilla/5.0 (compatible; Yahoo! Slurp; http...	305	0.06%	466
4.	74.6.8.126_Mozilla/5.0 (compatible; Yahoo! Slurp; http...	245	0.05%	1,463
5.	74.6.8.126_Mozilla/5.0 (compatible; Yahoo! Slurp/3.0; h...	238	0.05%	686
6.	208.189.200.2_Mozilla/4.0 (compatible; MSIE 6.0; Window...	232	0.05%	21,279

7.	207.238.103.14_Mozilla/4.0 (compatible;)	227	0.04%	512
8.	65.216.122.126_Mozilla/4.0 (compatible; MSIE 6.0; Windo...	222	0.04%	8,797
9.	167.211.190.2_Mozilla/4.0 (compatible;)	218	0.04%	306
10.	75.141.184.3_Mozilla/4.0 (compatible;)	202	0.04%	903
11.	206.197.217.20_Mozilla/4.0 (compatible;)	201	0.04%	551
12.	65.55.209.202_msnbot/1.0 ( http://search.msn.com/msnbot...	195	0.04%	362
13.	65.216.122.126_Mozilla/4.0 (compatible; MSIE 6.0; Windo...	190	0.04%	14,587
14.	65.55.209.201_msnbot/1.0 ( http://search.msn.com/msnbot...	186	0.04%	407
15.	12.181.197.100_Mozilla/4.0 (compatible; MSIE 6.0; Windo...	182	0.04%	14,784
16.	205.188.117.194_Mozilla/4.0 (compatible; MSIE 6.0; AOL ...	181	0.04%	321
17.	65.201.123.214_Mozilla/4.0 (compatible; MSIE 6.0; Windo...	180	0.04%	14,319
18.	192.91.173.42_Mozilla/4.0 (compatible; MSIE 6.0; Window...	178	0.04%	9,218
19.	192.91.172.42_Mozilla/4.0 (compatible;)	177	0.03%	610
20.	192.31.106.35_Mozilla/4.0 (compatible; MSIE 6.0; Window...	176	0.03%	8,868
	<b>Subtotal</b>	<b>4,721</b>	<b>0.93%</b>	<b>102,146</b>
	<b>Other</b>	<b>503,248</b>	<b>99.07%</b>	<b>15,544,606</b>
	<b>Total</b>	<b>507,969</b>	<b>100.00%</b>	<b>15,646,752</b>

# New vs. Return Visits

This report compares the number of visits by new and returning visitors to your site.



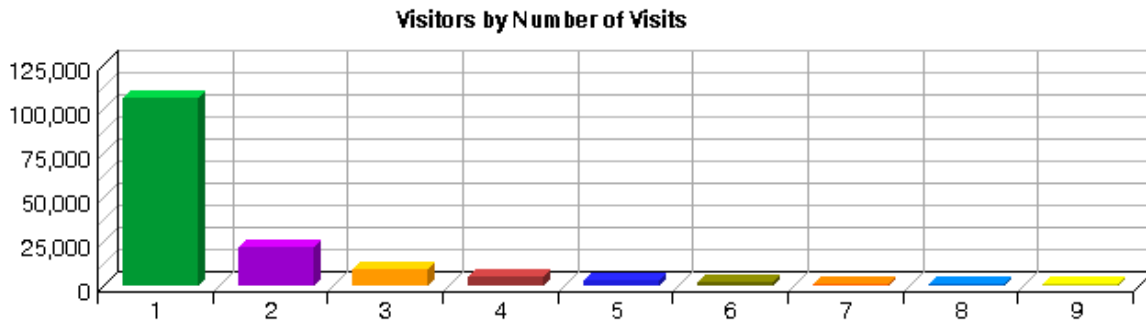
**New vs. Return Visits**

	<b>Visitor Type</b>	<b>Visits</b>	<b>%</b>
1.	Visitors Not Accepting Cookies	507,969	100.00%
	<b>Total</b>	<b>507,969</b>	<b>100.00%</b>



# Visitors by Number of Visits

This report shows the distribution of visitors based on how many times each visitor visited your site.



**Visitors by Number of Visits**

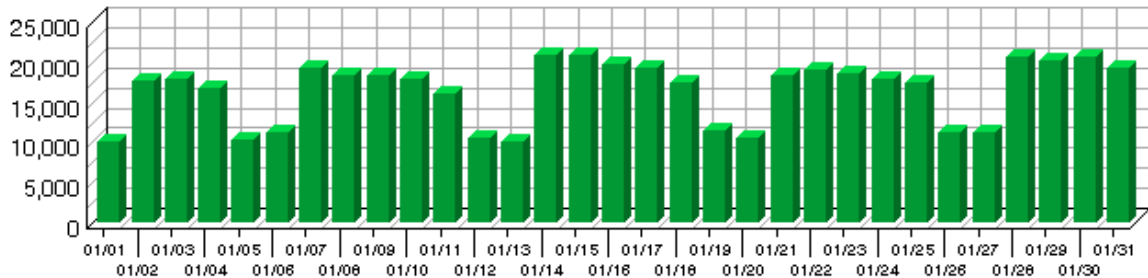
Number of Visits	Unique Visitors	%
1 visit	105,788	67.15%
2 visits	22,218	14.10%
3 visits	9,185	5.83%
4 visits	4,984	3.16%
5 visits	2,999	1.90%
6 visits	2,021	1.28%
7 visits	1,374	0.87%
8 visits	1,051	0.67%
9 visits	863	0.55%
<b>Subtotal</b>	<b>150,483</b>	<b>95.52%</b>
<b>Other</b>	<b>7,062</b>	<b>4.48%</b>
<b>Total</b>	<b>157,545</b>	<b>100.00%</b>



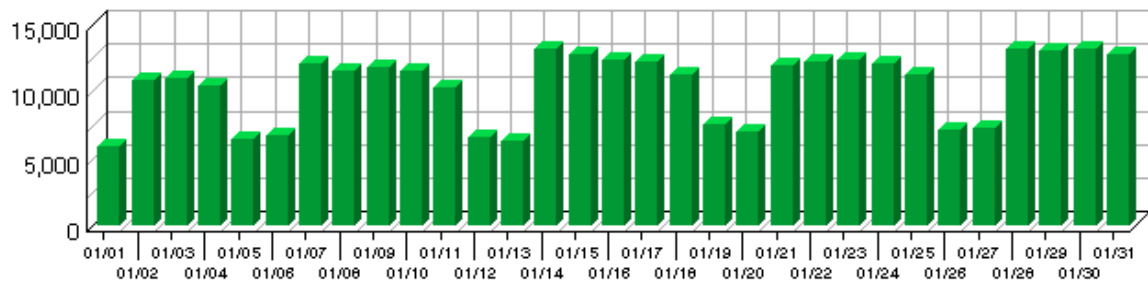
# Visitors Trend

This report shows how many times visitors visited your web site and how long they stayed. The information is divided into time slices based on the duration of the log file. Visits are freshly counted during each time interval in the report. Some visits may span more than one time interval, and therefore a single visit may be counted more than once. This manner of counting visits may cause the Visits Trend total visits to exceed the total visits shown on the Overview Dashboard page.

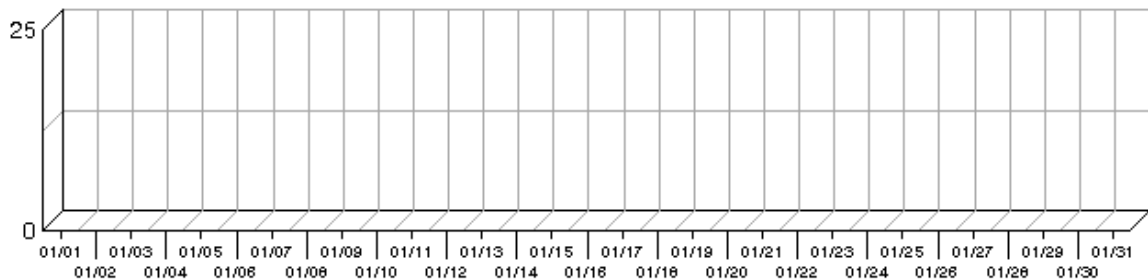
**Visitors Trend**



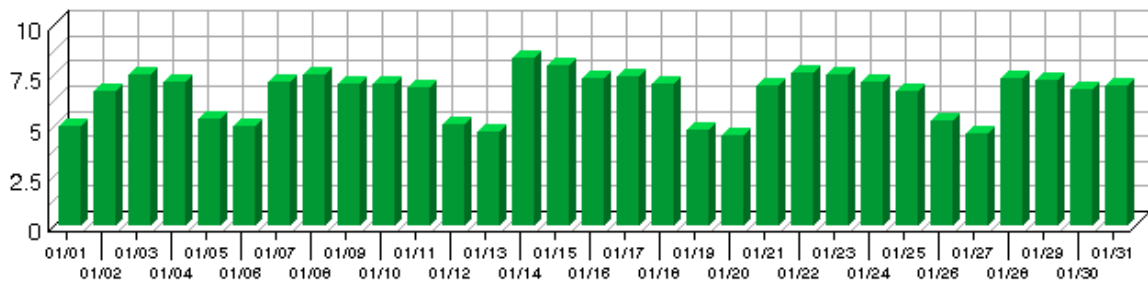
**Unique Visitors Trend**



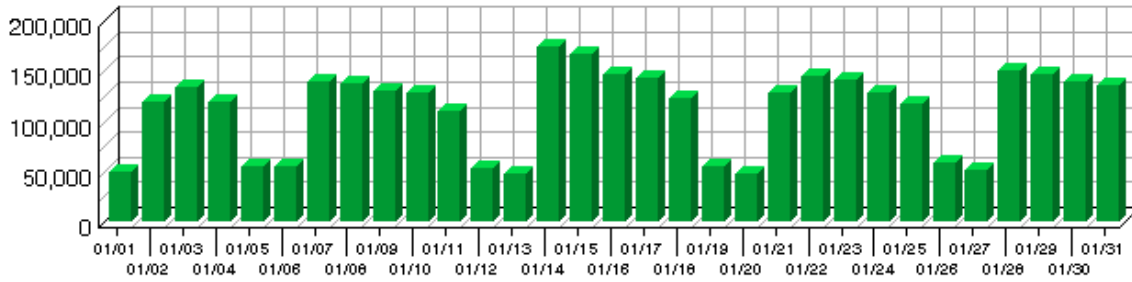
**First Time Visitors Trend**



**Average Length of Visit Trend**



**Visitor Minutes Trend**



**Visitors Trend**

Time Interval	Visits	Unique Visitors	First Time Visitors	Avg Visit Length	Visitor Minutes
01/01	9,993	5,981	0	00:04:56	49,407.88
01/02	17,601	10,892	0	00:06:43	118,389.85
01/03	17,974	11,041	0	00:07:29	134,623.70
01/04	16,662	10,420	0	00:07:09	119,372.92
01/05	10,321	6,411	0	00:05:17	54,694.18
01/06	11,177	6,688	0	00:04:55	55,121.58
01/07	19,289	12,064	0	00:07:12	139,043.78
01/08	18,341	11,510	0	00:07:32	138,378.35
01/09	18,375	11,815	0	00:07:06	130,512.30
01/10	17,924	11,571	0	00:07:07	127,701.33
01/11	16,074	10,283	0	00:06:53	110,826.87
01/12	10,453	6,563	0	00:05:01	52,509.72
01/13	10,183	6,347	0	00:04:40	47,597.57
01/14	20,962	13,226	0	00:08:19	174,556.98
01/15	20,932	12,766	0	00:07:57	166,413.70
01/16	19,736	12,371	0	00:07:23	145,996.08
01/17	19,349	12,287	0	00:07:25	143,826.38
01/18	17,533	11,280	0	00:07:02	123,536.32
01/19	11,437	7,547	0	00:04:44	54,141.15
01/20	10,532	6,991	0	00:04:30	47,515.12
01/21	18,391	11,935	0	00:06:59	128,547.48
01/22	18,982	12,257	0	00:07:37	144,748.33
01/23	18,628	12,325	0	00:07:34	141,066.37
01/24	17,966	12,097	0	00:07:11	129,101.07
01/25	17,374	11,246	0	00:06:44	117,177.87
01/26	11,287	7,187	0	00:05:16	59,496.55
01/27	11,170	7,267	0	00:04:34	51,123.75
01/28	20,655	13,204	0	00:07:18	150,811.27
01/29	20,126	13,016	0	00:07:16	146,337.28
01/30	20,534	13,220	0	00:06:49	140,182.78

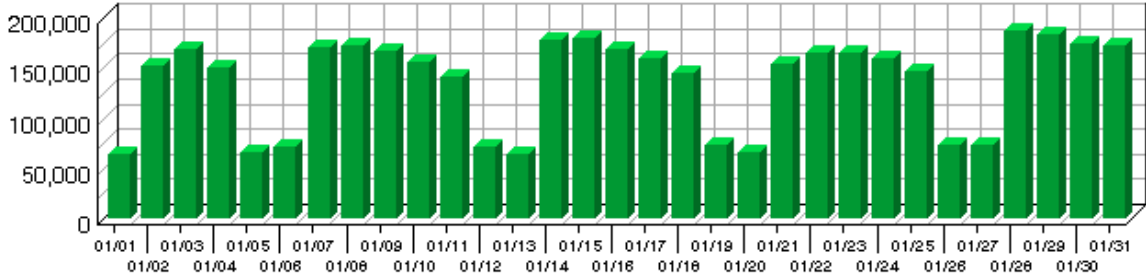
01/31	19,270	12,782	0	00:07:00	135,185.70
<b>Average</b>	<b>16,426</b>	<b>10,470</b>	<b>0</b>	<b>N/A</b>	<b>112,191.75</b>
<b>Total</b>	<b>509,231</b>	<b>324,590</b>	<b>0</b>	<b>N/A</b>	<b>3,477,944.22</b>



# Pages Dashboard

This displays key graphs and tables that provide an overview of the Pages chapter. Click on the title of a graph or table to navigate to the corresponding page.

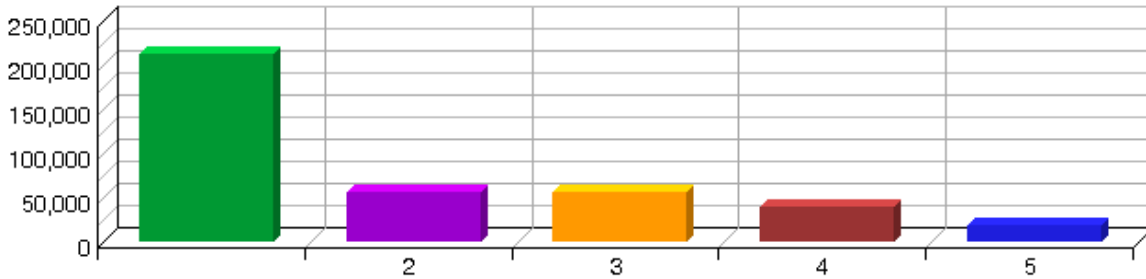
### Page Views Trend



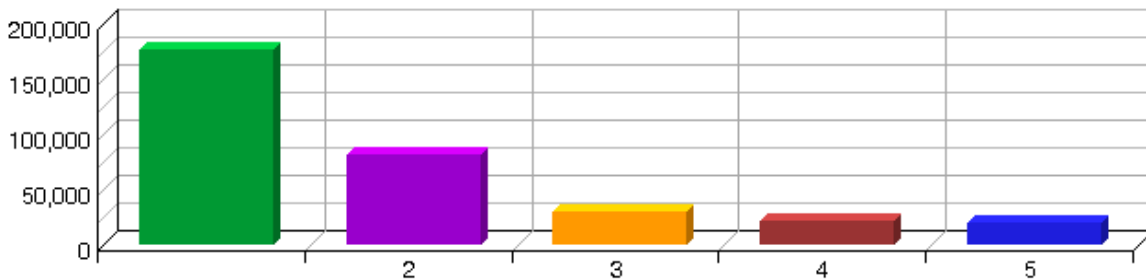
### Page View Summary

Page Views	4,246,368
Average per Day	136,979
Average Page Views per Visit	8.36

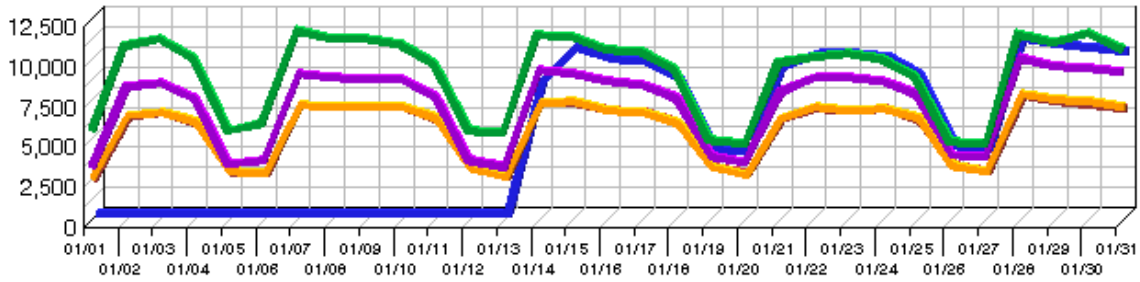
### Top Entry Pages



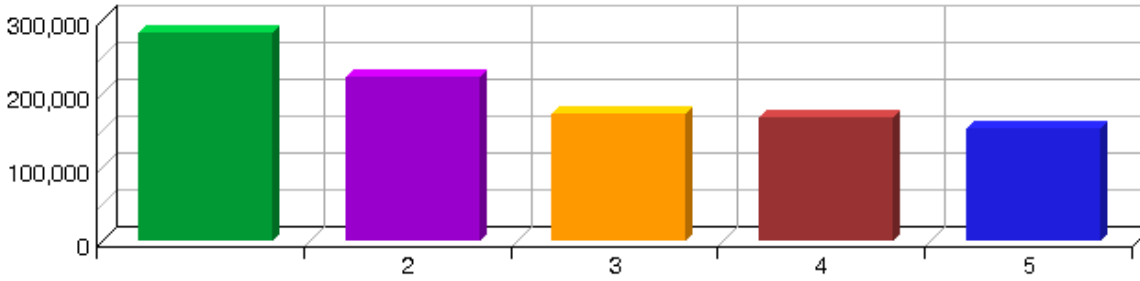
### Top Exit Pages



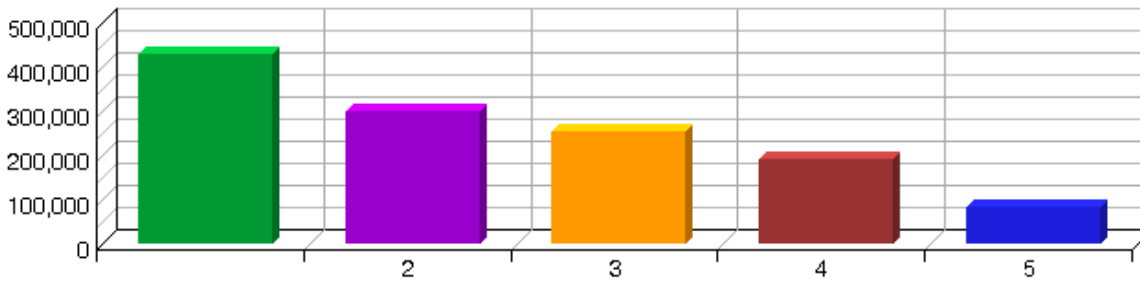
**Top Pages by Visits Trend**



**Top Pages by Visits**



**Top Directories by Visits**



# Top Pages

This identifies the most popular web pages on your site and shows you the number of visits for each, and displays the average length of time the page was viewed.



Top Pages

	Pages	Visits	%	Views	Avg Time Viewed	Avg Time to Serve
1.	<a href="http://www.tad.org/Datasearch/re.cfm">http://www.tad.org/Datasearch/re.cfm</a>	282,909	15.33%	950,280	00:01:39	0
2.	<a href="http://www.tad.org/">http://www.tad.org/</a>	221,691	12.01%	311,958	00:00:38	0
3.	<a href="http://www.tad.org/Datasearch/re_location_search.cfm">http://www.tad.org/Datasearch/re_location_search.cfm</a>	172,553	9.35%	423,666	00:00:36	0
4.	<a href="http://www.tad.org/Datasearch/relocation.cfm">http://www.tad.org/Datasearch/relocation.cfm</a>	168,248	9.12%	513,491	00:00:24	0
5.	<a href="http://www.tad.org/Datasearch/datasearch.cfm">http://www.tad.org/Datasearch/datasearch.cfm</a>	152,788	8.28%	273,661	00:00:26	0
6.	<a href="http://www.tad.org/Datasearch/re_powner.cfm">http://www.tad.org/Datasearch/re_powner.cfm</a>	125,634	6.81%	208,615	00:02:21	0
7.	<a href="http://www.tad.org/Datasearch/datasearch.htm">http://www.tad.org/Datasearch/datasearch.htm</a>	112,535	6.10%	153,341	00:00:12	0
8.	<a href="http://www.tad.org/Datasearch/">http://www.tad.org/Datasearch/</a>	106,916	5.79%	257,459	00:00:31	0

9.	<a href="http://www.tad.org/Datasearch/reowner.cfm">re_owner_search.cfm http://www.tad.org/ Datasearch/ reowner.cfm</a>	102,512	5.56%	345,890	00:00:28	0
10.	<a href="http://www.tad.org/Datasearch/geo.cfm">http://www.tad.org/ Datasearch/geo.cfm</a>	43,153	2.34%	153,974	00:00:40	0
11.	<a href="http://www.tad.org/Datasearch/reprintablePDF.cfm">http://www.tad.org/ Datasearch/ reprintablePDF.cfm</a>	24,588	1.33%	78,206	00:02:12	0
12.	<a href="http://www.tad.org/Datasearch/exemptionRates.cfm">http://www.tad.org/ Datasearch/ exemptionRates.cfm</a>	18,576	1.01%	21,896	00:01:41	0
13.	<a href="http://www.tad.org/Datasearch/geoentry.cfm">http://www.tad.org/ Datasearch/ geoentry.cfm</a>	15,090	0.82%	37,035	00:00:34	0
14.	<a href="http://www.tad.org/Datasearch/reentry.cfm">http://www.tad.org/ Datasearch/reentry.cfm</a>	13,647	0.74%	58,375	00:00:20	0
15.	<a href="http://www.tad.org/Datasearch/powner.cfm">http://www.tad.org/ Datasearch/powner.cfm</a>	12,975	0.70%	24,841	00:01:19	0
16.	<a href="http://www.tad.org/Datasearch/subdivision_search.cfm">http://www.tad.org/ Datasearch/ subdivision_search.cfm</a>	12,852	0.70%	23,633	00:00:26	0
17.	<a href="http://www.tad.org/MapIndex/ndxall.htm">http://www.tad.org/ MapIndex/ndxall.htm</a>	12,119	0.66%	16,978	00:00:33	0
18.	<a href="http://www.tad.org/Datasearch/subdivisionname.cfm">http://www.tad.org/ Datasearch/ subdivisionname.cfm</a>	9,401	0.51%	22,403	00:00:50	0
19.	<a href="http://www.tad.org/datasearch/hsTestjscookie.cfm">http://www.tad.org/ datasearch/ hsTestjscookie.cfm</a>	7,301	0.40%	8,638	00:01:04	0
20.	<a href="http://www.tad.org/Datasearch/bpp.cfm">http://www.tad.org/ Datasearch/bpp.cfm</a>	6,952	0.38%	15,379	00:01:22	0
	<b>Subtotal</b>	<b>1,622,440</b>	<b>87.92%</b>	<b>3,899,719</b>	<b>00:00:52</b>	
	<b>Other</b>	<b>222,859</b>	<b>12.08%</b>	<b>346,649</b>	<b>00:01:04</b>	
	<b>Total</b>	<b>1,845,299</b>	<b>100.00%</b>	<b>4,246,368</b>	<b>00:00:53</b>	

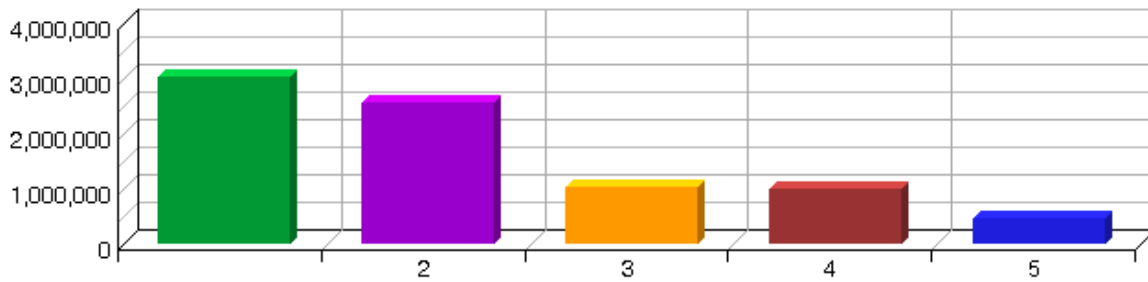
# Files Dashboard

This displays key graphs and tables that provide an overview of the Files chapter. Click on the title of a graph or table to navigate to the corresponding page.

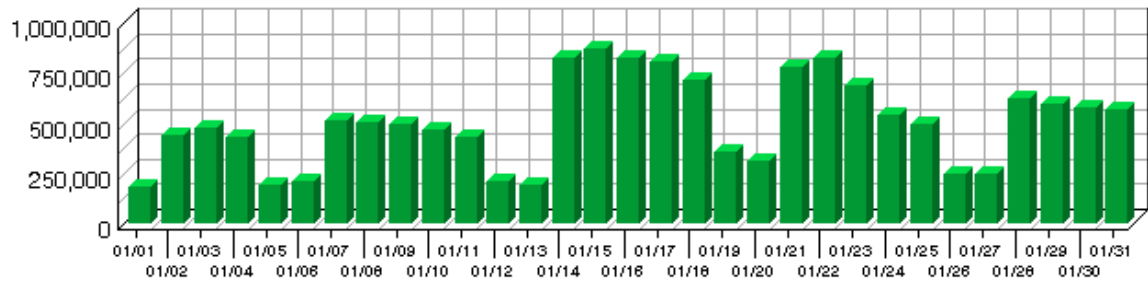
## Hit Summary

Successful Hits for Entire Site	15,652,416
Average Hits per Day	504,916
Home Page Hits	311,955

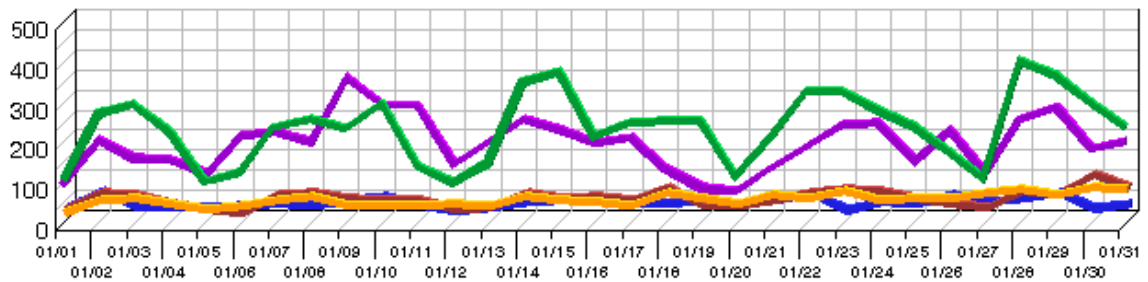
Most Accessed File Types by Files



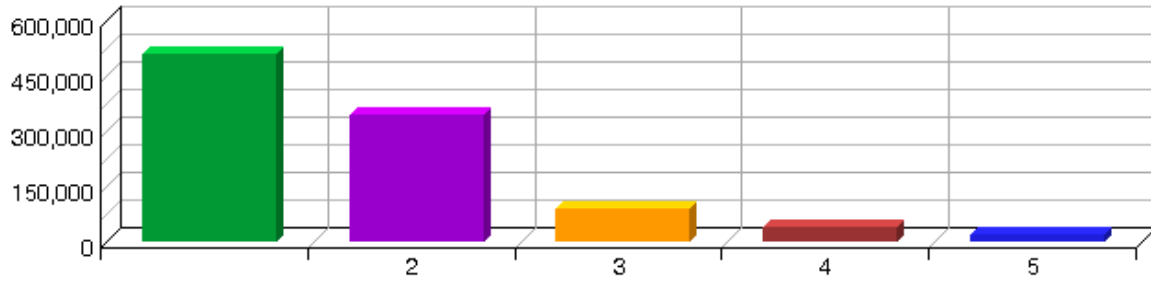
Hits Trend



Most Downloaded Files Trend



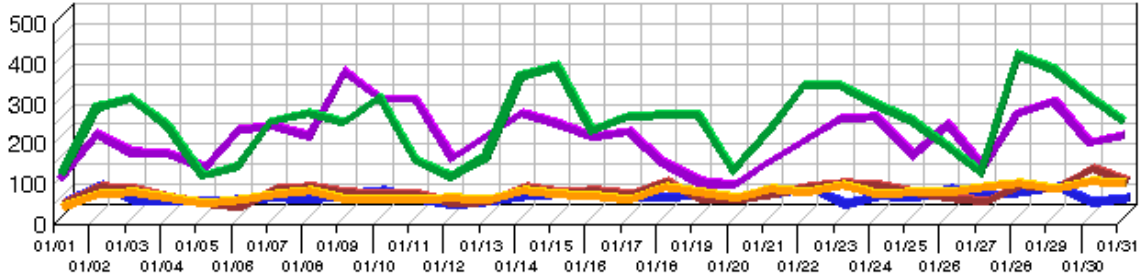
**Most Uploaded Files**



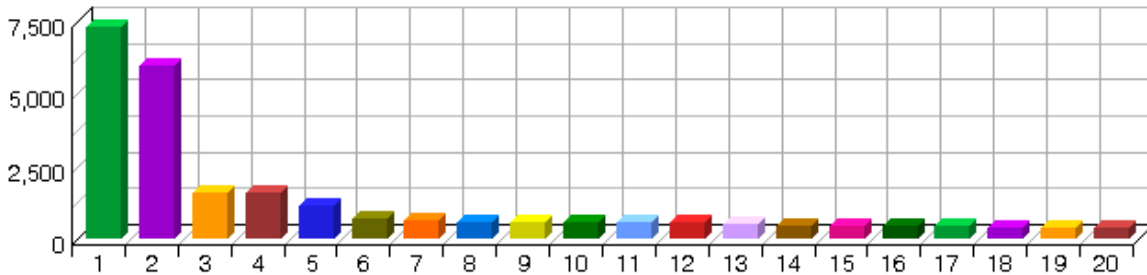
# Most Downloaded Files

This report identifies the most popular files downloaded from your site.

**Most Downloaded Files Trend**



**Most Downloaded Files**



**Most Downloaded Files**

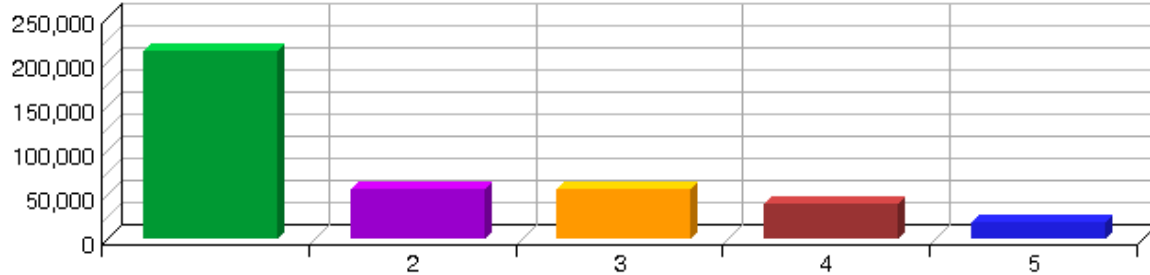
Downloaded Files	Downloads	%	Visits
1. <a href="http://www.tad.org/ftp_data/ReappraisalPlan2007-2008.pdf">http://www.tad.org/ftp_data/ReappraisalPlan2007-2008.pdf</a>	7,328	5.73%	1,259
2. <a href="http://www.tad.org/ftp_data/DataFiles/Mineral Interest ...">http://www.tad.org/ftp_data/DataFiles/Mineral Interest ...</a>	6,004	4.69%	1,154
3. <a href="http://www.tad.org/ftp_data/ResidentialValueDocs.pdf">http://www.tad.org/ftp_data/ResidentialValueDocs.pdf</a>	1,594	1.25%	1,190
4. <a href="http://www.tad.org/ftp_data/CommercialValueDocs.pdf">http://www.tad.org/ftp_data/CommercialValueDocs.pdf</a>	1,593	1.25%	1,205
5. <a href="http://www.tad.org/ftp_data/DataFiles/TaxEstimator353.zip">http://www.tad.org/ftp_data/DataFiles/TaxEstimator353.zip</a>	1,137	0.89%	783
6. <a href="http://www.tad.org/mappdf/t_2096-356.pdf">http://www.tad.org/mappdf/t_2096-356.pdf</a>	729	0.57%	216
7. <a href="http://www.tad.org/ftp_data/Forms and Applications/2008...">http://www.tad.org/ftp_data/Forms and Applications/2008...</a>	631	0.49%	276
8. <a href="http://www.tad.org/mappdf/t_2030-388.pdf">http://www.tad.org/mappdf/t_2030-388.pdf</a>	603	0.47%	204
9. <a href="http://www.tad.org/mappdf/t_2054-388.pdf">http://www.tad.org/mappdf/t_2054-388.pdf</a>	583	0.46%	202
10. <a href="http://www.tad.org/ftp_data/howtobuilddatabase.pdf">http://www.tad.org/ftp_data/howtobuilddatabase.pdf</a>	582	0.46%	135
11. <a href="http://www.tad.org/mappdf/t_2048-384.pdf">http://www.tad.org/mappdf/t_2048-384.pdf</a>	580	0.45%	229
12. <a href="http://www.tad.org/mappdf/t_2018-380.pdf">http://www.tad.org/mappdf/t_2018-380.pdf</a>	554	0.43%	117
13. <a href="http://www.tad.org/mappdf/t_2108-380.pdf">http://www.tad.org/mappdf/t_2108-380.pdf</a>	489	0.38%	208
14. <a href="http://www.tad.org/mappdf/t_2096-368.pdf">http://www.tad.org/mappdf/t_2096-368.pdf</a>	467	0.37%	269
15. <a href="http://www.tad.org/ftp_data/DIST2008.pdf">http://www.tad.org/ftp_data/DIST2008.pdf</a>	461	0.36%	84
16. <a href="http://www.tad.org/mappdf/t_2108-384.pdf">http://www.tad.org/mappdf/t_2108-384.pdf</a>	436	0.34%	216
17. <a href="http://www.tad.org/ftp_data/Forms and Applications/2008...">http://www.tad.org/ftp_data/Forms and Applications/2008...</a>	420	0.33%	187
18. <a href="http://www.tad.org/mappdf/t_2114-340.pdf">http://www.tad.org/mappdf/t_2114-340.pdf</a>	391	0.31%	125

19.	<a href="http://www.tad.org/distdata/aaaa.zip">http://www.tad.org/distdata/aaaa.zip</a>	390	0.30%	285
20.	<a href="http://www.tad.org/mappdf/t_2030-348.pdf">http://www.tad.org/mappdf/t_2030-348.pdf</a>	387	0.30%	125
	<b>Subtotal</b>	<b>25,359</b>	<b>19.83%</b>	<b>8,469</b>
	<b>Other</b>	<b>102,522</b>	<b>80.17%</b>	<b>70,879</b>
	<b>Total</b>	<b>127,881</b>	<b>100.00%</b>	<b>79,348</b>

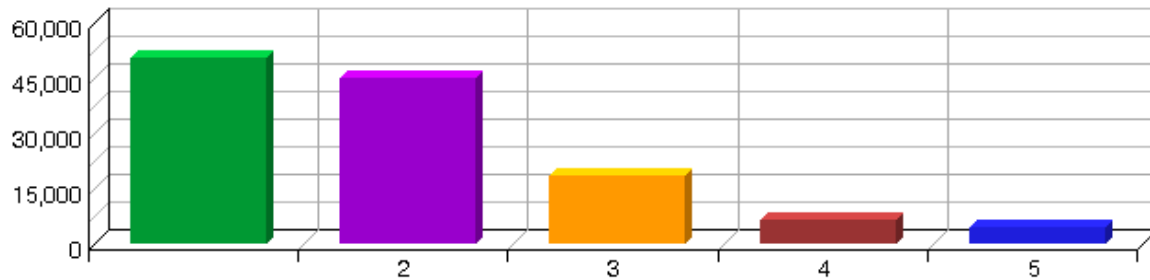
# Navigation Dashboard

This dashboard summarizes important information related to online navigation.

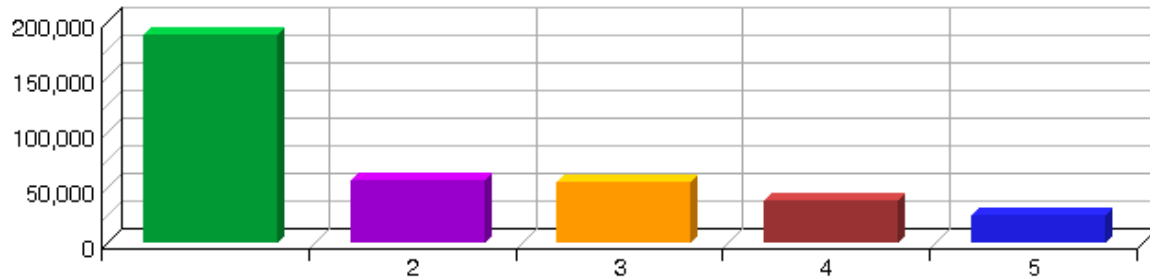
### Top Entry Pages



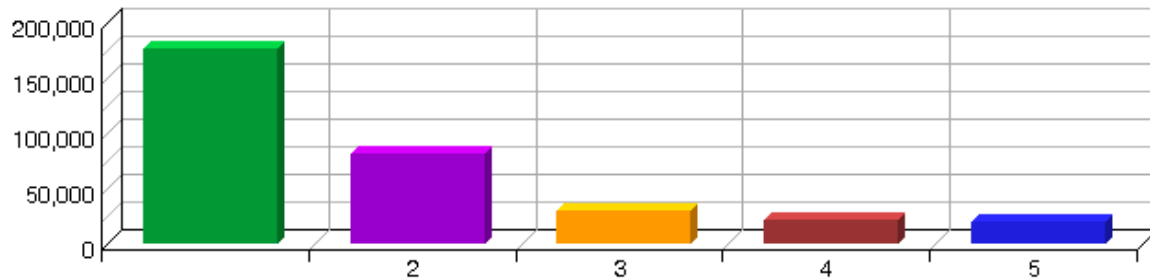
### Single Access Pages



### Top Entry Files



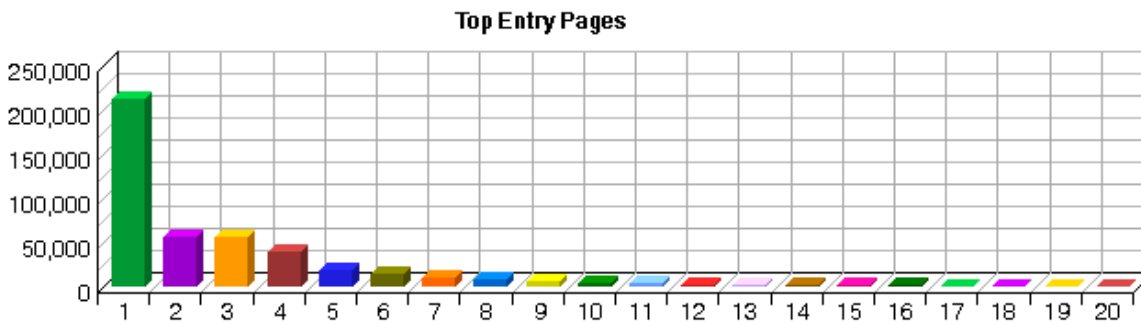
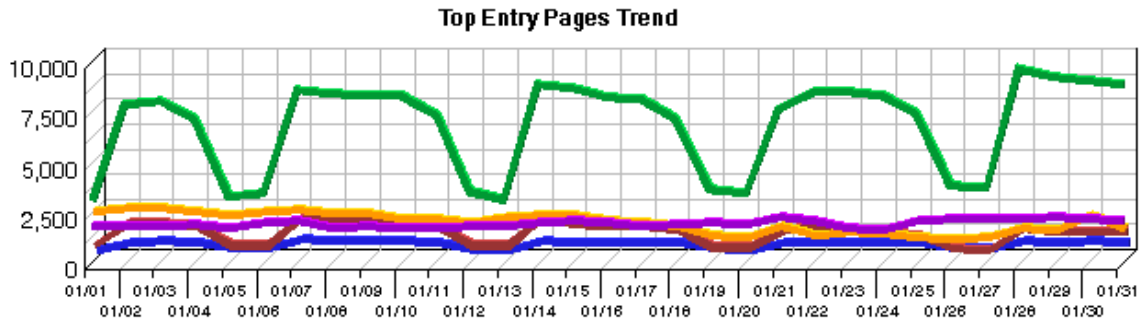
### Top Exit Pages





# Top Entry Pages

This report identifies the first page viewed when a visitor visits your site. The most common entry page is usually the home page, but other common entry pages include specific URLs that visitors type, pages that have been bookmarked, or pages referred to by other sites.



**Top Entry Pages**

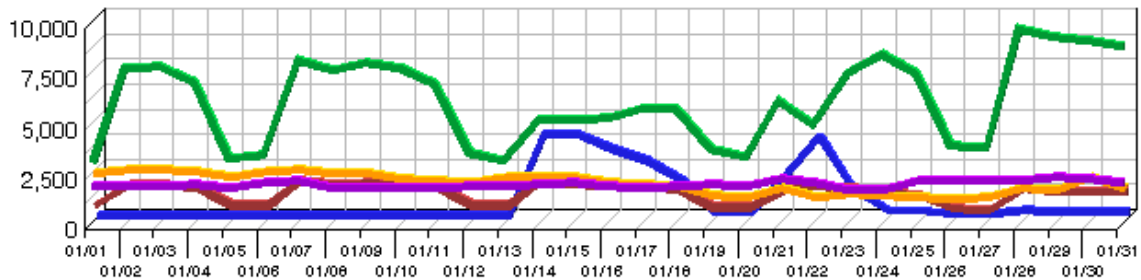
	Pages	Visits	%
1.	<a href="http://www.tad.org/">http://www.tad.org/</a>	213,184	45.46%
2.	<a href="http://www.tad.org/Datasearch/re_powner.cfm">http://www.tad.org/Datasearch/re_powner.cfm</a>	57,077	12.17%
3.	<a href="http://www.tad.org/Datasearch/re.cfm">http://www.tad.org/Datasearch/re.cfm</a>	56,974	12.15%
4.	<a href="http://www.tad.org/Datasearch/datasearch.htm">http://www.tad.org/Datasearch/datasearch.htm</a>	39,396	8.40%
5.	<a href="http://www.tad.org/Datasearch/re_location_search.cfm">http://www.tad.org/Datasearch/re_location_search.cfm</a>	18,894	4.03%
6.	<a href="http://www.tad.org/Datasearch/datasearch.cfm">http://www.tad.org/Datasearch/datasearch.cfm</a>	14,928	3.18%
7.	<a href="http://www.tad.org/Datasearch/relocation.cfm">http://www.tad.org/Datasearch/relocation.cfm</a>	10,917	2.33%
8.	<a href="http://www.tad.org/Datasearch/geo.cfm">http://www.tad.org/Datasearch/geo.cfm</a>	9,206	1.96%
9.	<a href="http://www.tad.org/Datasearch/re_owner_search.cfm">http://www.tad.org/Datasearch/re_owner_search.cfm</a>	6,709	1.43%

10.	<a href="http://www.tad.org/Datasearch/reowner.cfm">http://www.tad.org/Datasearch/reowner.cfm</a>	4,172	0.89%
11.	<a href="http://www.tad.org/Datasearch/exemptionRates.cfm">http://www.tad.org/Datasearch/exemptionRates.cfm</a>	3,438	0.73%
12.	<a href="http://www.tad.org/robots.txt">http://www.tad.org/robots.txt</a>	2,772	0.59%
13.	<a href="http://www.tad.org/Datasearch/hsTestjscookie.cfm">http://www.tad.org/Datasearch/hsTestjscookie.cfm</a>	2,704	0.58%
14.	<a href="http://www.tad.org/Datasearch/reprintablePDF.cfm">http://www.tad.org/Datasearch/reprintablePDF.cfm</a>	1,894	0.40%
15.	<a href="http://www.tad.org/Datasearch/reentry.cfm">http://www.tad.org/Datasearch/reentry.cfm</a>	1,496	0.32%
16.	<a href="http://www.tad.org/datasearch/geoentry.cfm">http://www.tad.org/datasearch/geoentry.cfm</a>	1,440	0.31%
17.	<a href="http://www.tad.org/Datasearch/re_to_bpp.cfm">http://www.tad.org/Datasearch/re_to_bpp.cfm</a>	1,041	0.22%
18.	<a href="http://www.tad.org/webpages/Links_CAD.htm">http://www.tad.org/webpages/Links_CAD.htm</a>	1,002	0.21%
19.	<a href="http://www.tad.org/Datasearch/subdivision_search.cfm">http://www.tad.org/Datasearch/subdivision_search.cfm</a>	982	0.21%
20.	<a href="http://www.tad.org/MapIndex/ndxall.htm">http://www.tad.org/MapIndex/ndxall.htm</a>	852	0.18%
	<b>Subtotal</b>	<b>449,078</b>	<b>95.76%</b>
	<b>Other</b>	<b>19,894</b>	<b>4.24%</b>
	<b>Total</b>	<b>468,972</b>	<b>100.00%</b>

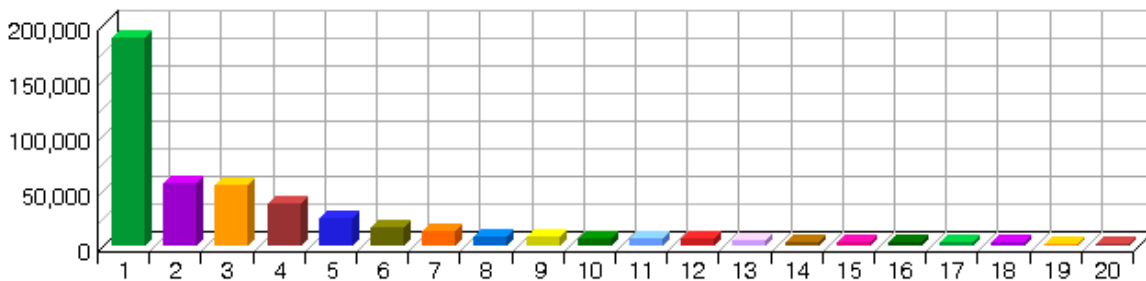
# Top Entry Files

This report identifies the first hit from a visitor visiting your site. This is most likely the home page but, in some cases it may also be specific URLs that visitors enter to go directly to a particular file or page.

**Top Entry Files Trend**



**Top Entry Files**



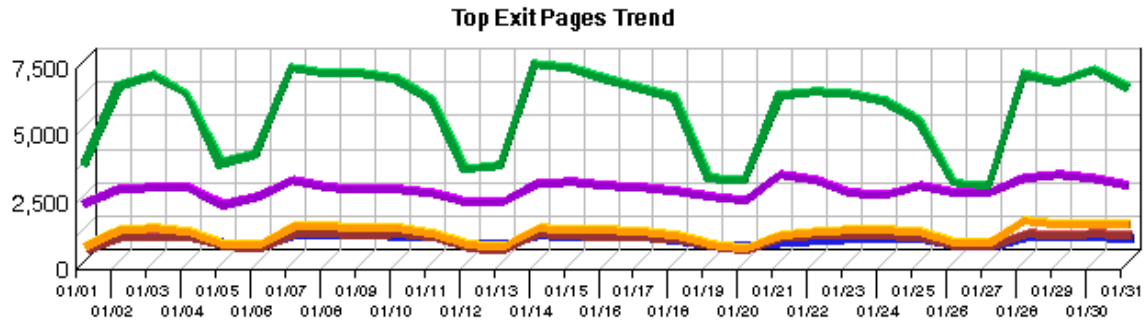
**Top Entry Files**

Files	Visits	%
1. <a href="http://www.tad.org/">http://www.tad.org/</a>	188,013	37.00%
2. <a href="http://www.tad.org/Datasearch/re_powner.cfm">http://www.tad.org/Datasearch/re_powner.cfm</a>	55,943	11.01%
3. <a href="http://www.tad.org/Datasearch/re.cfm">http://www.tad.org/Datasearch/re.cfm</a>	55,681	10.96%
4. <a href="http://www.tad.org/Datasearch/datasearch.htm">http://www.tad.org/Datasearch/datasearch.htm</a>	38,219	7.52%
5. <a href="http://www.tad.org/WebPages/TADWeb.css">http://www.tad.org/WebPages/TADWeb.css</a>	25,208	4.96%
6. <a href="http://www.tad.org/Datasearch/re_location_search.cfm">http://www.tad.org/Datasearch/re_location_search.cfm</a>	16,807	3.31%
7. <a href="http://www.tad.org/Datasearch/datasearch.cfm">http://www.tad.org/Datasearch/datasearch.cfm</a>	12,731	2.51%
8. <a href="http://www.tad.org/Datasearch/geo.cfm">http://www.tad.org/Datasearch/geo.cfm</a>	8,928	1.76%
9. <a href="http://www.tad.org/Datasearch/relocation.cfm">http://www.tad.org/Datasearch/relocation.cfm</a>	8,242	1.62%
10. <a href="http://www.tad.org/images/FortWorthDowntown.swf">http://www.tad.org/images/FortWorthDowntown.swf</a>	7,234	1.42%
11. <a href="http://www.tad.org/images/tadlogos-final-b.jpg">http://www.tad.org/images/tadlogos-final-b.jpg</a>	6,598	1.30%
12. <a href="http://www.tad.org/Datasearch/re_owner_search.cfm">http://www.tad.org/Datasearch/re_owner_search.cfm</a>	6,001	1.18%
13. <a href="http://www.tad.org/tad.ico">http://www.tad.org/tad.ico</a>	5,559	1.09%
14. <a href="http://www.tad.org/Datasearch/reowner.cfm">http://www.tad.org/Datasearch/reowner.cfm</a>	3,664	0.72%
15. <a href="http://www.tad.org/Datasearch/exemptionRates.cfm">http://www.tad.org/Datasearch/exemptionRates.cfm</a>	3,404	0.67%
16. <a href="http://www.tad.org/robots.txt">http://www.tad.org/robots.txt</a>	2,764	0.54%
17. <a href="http://www.tad.org/Datasearch/hsTestjscookie.cfm">http://www.tad.org/Datasearch/hsTestjscookie.cfm</a>	2,692	0.53%

18.	<a href="http://www.tad.org/Datasearch/TADWebDatasearch.css">http://www.tad.org/Datasearch/TADWebDatasearch.css</a>	2,687	0.53%
19.	<a href="http://www.tad.org/WebPages/AC_RunActiveContent.js">http://www.tad.org/WebPages/AC_RunActiveContent.js</a>	2,233	0.44%
20.	<a href="http://www.tad.org/Images/ov1.gif">http://www.tad.org/Images/ov1.gif</a>	1,819	0.36%
	<b>Subtotal</b>	<b>454,427</b>	<b>89.42%</b>
	<b>Other</b>	<b>53,783</b>	<b>10.58%</b>
	<b>Total</b>	<b>508,210</b>	<b>100.00%</b>

# Top Exit Pages

This report identifies the last page visitors viewed before they left your site.



**Top Exit Pages**

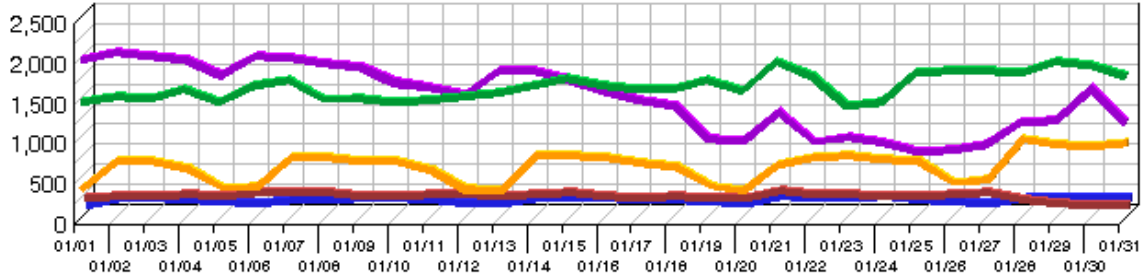
	Pages	Visits	%
1.	<a href="http://www.tad.org/Datasearch/re.cfm">http://www.tad.org/Datasearch/re.cfm</a>	176,387	37.63%
2.	<a href="http://www.tad.org/Datasearch/re_powner.cfm">http://www.tad.org/Datasearch/re_powner.cfm</a>	82,337	17.57%
3.	<a href="http://www.tad.org/">http://www.tad.org/</a>	29,302	6.25%
4.	<a href="http://www.tad.org/Datasearch/re_location_search.cfm">http://www.tad.org/Datasearch/re_location_search.cfm</a>	21,283	4.54%
5.	<a href="http://www.tad.org/Datasearch/reowner.cfm">http://www.tad.org/Datasearch/reowner.cfm</a>	19,305	4.12%
6.	<a href="http://www.tad.org/Datasearch/relocation.cfm">http://www.tad.org/Datasearch/relocation.cfm</a>	18,700	3.99%
7.	<a href="http://www.tad.org/Datasearch/reprintablePDF.cfm">http://www.tad.org/Datasearch/reprintablePDF.cfm</a>	13,731	2.93%
8.	<a href="http://www.tad.org/Datasearch/datasearch.cfm">http://www.tad.org/Datasearch/datasearch.cfm</a>	13,126	2.80%
9.	<a href="http://www.tad.org/Datasearch/geo.cfm">http://www.tad.org/Datasearch/geo.cfm</a>	11,938	2.55%
10.	<a href="http://www.tad.org/Datasearch/">http://www.tad.org/Datasearch/</a>	11,308	2.41%

	<a href="#">re_owner_search.cfm</a>		
11.	<a href="http://www.tad.org/Datasearch/exemptionRates.cfm">http://www.tad.org/Datasearch/exemptionRates.cfm</a>	6,694	1.43%
12.	<a href="http://www.tad.org/Datasearch/powner.cfm">http://www.tad.org/Datasearch/powner.cfm</a>	4,410	0.94%
13.	<a href="http://www.tad.org/Datasearch/datasearch.htm">http://www.tad.org/Datasearch/datasearch.htm</a>	4,163	0.89%
14.	<a href="http://www.tad.org/Datasearch/hsTestjscookie.cfm">http://www.tad.org/Datasearch/hsTestjscookie.cfm</a>	2,683	0.57%
15.	<a href="http://www.tad.org/Datasearch/bpp.cfm">http://www.tad.org/Datasearch/bpp.cfm</a>	2,534	0.54%
16.	<a href="http://www.tad.org/MapIndex/map.cfm">http://www.tad.org/MapIndex/map.cfm</a>	2,058	0.44%
17.	<a href="http://www.tad.org/datasearch/resiclass.cfm">http://www.tad.org/datasearch/resiclass.cfm</a>	1,532	0.33%
18.	<a href="http://www.tad.org/WebPages/2007_tax_rates.htm">http://www.tad.org/WebPages/2007_tax_rates.htm</a>	1,398	0.30%
19.	<a href="http://www.tad.org/Datasearch/reentry.cfm">http://www.tad.org/Datasearch/reentry.cfm</a>	1,364	0.29%
20.	<a href="http://www.tad.org/robots.txt">http://www.tad.org/robots.txt</a>	1,352	0.29%
	<b>Subtotal</b>	<b>425,605</b>	<b>90.79%</b>
	<b>Other</b>	<b>43,150</b>	<b>9.21%</b>
	<b>Total</b>	<b>468,755</b>	<b>100.00%</b>

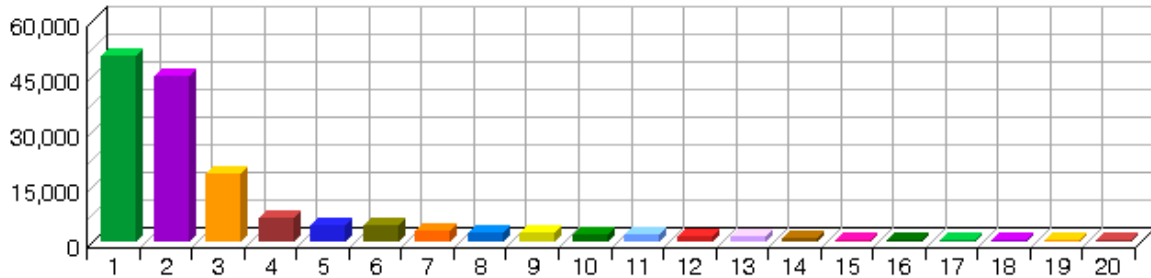
# Single Access Pages

This report identifies the pages on your web site that visitors open, then exit from, without viewing any other page.

Single Access Pages Trend



Single Access Pages



Single Access Pages

	Pages	Visits	%
1.	<a href="http://www.tad.org/Datasearch/re_powner.cfm">http://www.tad.org/Datasearch/re_powner.cfm</a>	50,440	31.65%
2.	<a href="http://www.tad.org/Datasearch/re.cfm">http://www.tad.org/Datasearch/re.cfm</a>	45,242	28.39%
3.	<a href="http://www.tad.org/">http://www.tad.org/</a>	18,402	11.55%
4.	<a href="http://www.tad.org/Datasearch/geo.cfm">http://www.tad.org/Datasearch/geo.cfm</a>	6,466	4.06%
5.	<a href="http://www.tad.org/Datasearch/re_location_search.cfm">http://www.tad.org/Datasearch/re_location_search.cfm</a>	4,485	2.81%
6.	<a href="http://www.tad.org/Datasearch/datasearch.cfm">http://www.tad.org/Datasearch/datasearch.cfm</a>	4,467	2.80%
7.	<a href="http://www.tad.org/Datasearch/exemptionRates.cfm">http://www.tad.org/Datasearch/exemptionRates.cfm</a>	2,944	1.85%
8.	<a href="http://www.tad.org/Datasearch/re_owner_search.cfm">http://www.tad.org/Datasearch/re_owner_search.cfm</a>	2,507	1.57%
9.	<a href="http://www.tad.org/Datasearch/hsTestjscookie.cfm">http://www.tad.org/Datasearch/hsTestjscookie.cfm</a>	2,326	1.46%

10.	<a href="http://www.tad.org/Datasearch/datasearch.htm">http://www.tad.org/Datasearch/datasearch.htm</a>	1,993	1.25%
11.	<a href="http://www.tad.org/Datasearch/relocation.cfm">http://www.tad.org/Datasearch/relocation.cfm</a>	1,871	1.17%
12.	<a href="http://www.tad.org/Datasearch/reprintablePDF.cfm">http://www.tad.org/Datasearch/reprintablePDF.cfm</a>	1,350	0.85%
13.	<a href="http://www.tad.org/robots.txt">http://www.tad.org/robots.txt</a>	1,291	0.81%
14.	<a href="http://www.tad.org/Datasearch/reowner.cfm">http://www.tad.org/Datasearch/reowner.cfm</a>	1,222	0.77%
15.	<a href="http://www.tad.org/Datasearch/re_to_bpp.cfm">http://www.tad.org/Datasearch/re_to_bpp.cfm</a>	671	0.42%
16.	<a href="http://www.tad.org/Datasearch/powner.cfm">http://www.tad.org/Datasearch/powner.cfm</a>	657	0.41%
17.	<a href="http://www.tad.org/WebPages/Links_CAD.htm">http://www.tad.org/WebPages/Links_CAD.htm</a>	651	0.41%
18.	<a href="http://www.tad.org/Datasearch/reprintable.cfm">http://www.tad.org/Datasearch/reprintable.cfm</a>	443	0.28%
19.	<a href="http://www.tad.org/Datasearch/bpp.cfm">http://www.tad.org/Datasearch/bpp.cfm</a>	441	0.28%
20.	<a href="http://www.tad.org/WebPages/free_downloads.cfm">http://www.tad.org/WebPages/free_downloads.cfm</a>	368	0.23%
	<b>Subtotal</b>	<b>148,237</b>	<b>93.01%</b>
	<b>Other</b>	<b>11,132</b>	<b>6.99%</b>
	<b>Total</b>	<b>159,369</b>	<b>100.00%</b>

# Top Paths Through Site

This report tracks visitor activity beginning with their entry page into the site—the first page they open—then all subsequent pages during their visit. The default definition for a page in this context is defined as a document ending with the extension .htm, .html, or .asp. This definition can be changed by the system administrator.

## Top Paths Through Site

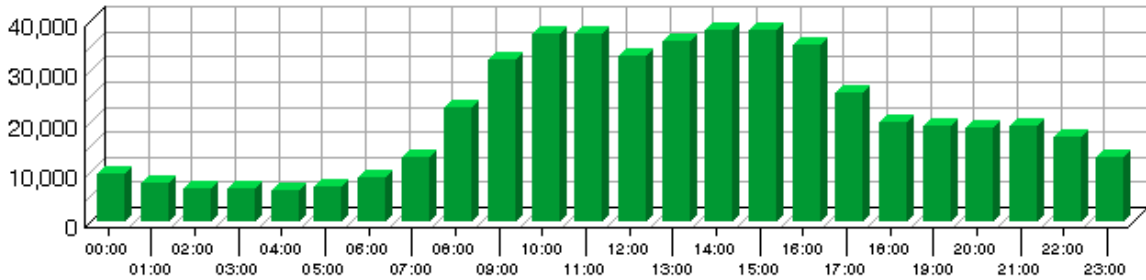
Starting Page	Paths from Start	Visits	%
All Entry Pages	1. <a href="http://www.tad.org/Datasearch/re_powner.cfm">http://www.tad.org/Datasearch/re_powner.cfm</a>	53,487	11.41%
	1. <a href="http://www.tad.org/Datasearch/re.cfm">http://www.tad.org/Datasearch/re.cfm</a>	50,969	10.87%
	1. <a href="http://www.tad.org/">http://www.tad.org/</a>	21,265	4.54%
	1. <a href="http://www.tad.org/">http://www.tad.org/</a>	20,672	4.41%
	1. <a href="http://www.tad.org/">http://www.tad.org/</a>		
	2. <a href="http://www.tad.org/Datasearch/datasearch.htm">http://www.tad.org/Datasearch/datasearch.htm</a>		
	3. <a href="http://www.tad.org/Datasearch/re_location_search.cfm">http://www.tad.org/Datasearch/re_location_search.cfm</a>		
	4. <a href="http://www.tad.org/Datasearch/relocation.cfm">http://www.tad.org/Datasearch/relocation.cfm</a>		
	5. <a href="http://www.tad.org/Datasearch/re.cfm">http://www.tad.org/Datasearch/re.cfm</a>		
		11,673	2.49%
	1. <a href="http://www.tad.org/">http://www.tad.org/</a>		
	2. <a href="http://www.tad.org/Datasearch/datasearch.htm">http://www.tad.org/Datasearch/datasearch.htm</a>		
	3. <a href="http://www.tad.org/Datasearch/re_owner_search.cfm">http://www.tad.org/Datasearch/re_owner_search.cfm</a>		
	4. <a href="http://www.tad.org/Datasearch/reowner.cfm">http://www.tad.org/Datasearch/reowner.cfm</a>		
	5. <a href="http://www.tad.org/Datasearch/re.cfm">http://www.tad.org/Datasearch/re.cfm</a>		
		6,979	1.49%
	1. <a href="http://www.tad.org/Datasearch/geo.cfm">http://www.tad.org/Datasearch/geo.cfm</a>		
		6,918	1.48%
	1. <a href="http://www.tad.org/">http://www.tad.org/</a>		
	2. <a href="http://www.tad.org/Datasearch/datasearch.htm">http://www.tad.org/Datasearch/datasearch.htm</a>		
3. <a href="http://www.tad.org/Datasearch/re_location_search.cfm">http://www.tad.org/Datasearch/re_location_search.cfm</a>			
4. <a href="http://www.tad.org/Datasearch/relocation.cfm">http://www.tad.org/Datasearch/relocation.cfm</a>			
5. <a href="http://www.tad.org/Datasearch/re_location_search.cfm">http://www.tad.org/Datasearch/re_location_search.cfm</a>			
	6,516	1.39%	
1. <a href="http://www.tad.org/Datasearch/re_location_search.cfm">http://www.tad.org/Datasearch/re_location_search.cfm</a>			
	4,584	0.98%	
1. <a href="http://www.tad.org/">http://www.tad.org/</a>			
2. <a href="http://www.tad.org/Datasearch/datasearch.htm">http://www.tad.org/Datasearch/datasearch.htm</a>			
3. <a href="http://www.tad.org/Datasearch/re_owner_search.cfm">http://www.tad.org/Datasearch/re_owner_search.cfm</a>			
4. <a href="http://www.tad.org/Datasearch/reowner.cfm">http://www.tad.org/Datasearch/reowner.cfm</a>			
5. <a href="http://www.tad.org/Datasearch/re_owner_search.cfm">http://www.tad.org/Datasearch/re_owner_search.cfm</a>			
	3,744	0.80%	
1. <a href="http://www.tad.org/Datasearch/re_owner_search.cfm">http://www.tad.org/Datasearch/re_owner_search.cfm</a>			
	3,673	0.78%	
1. <a href="http://www.tad.org/Datasearch/relocation.cfm">http://www.tad.org/Datasearch/relocation.cfm</a>			
	3,282	0.70%	
1. <a href="http://www.tad.org/">http://www.tad.org/</a>			

2. <a href="http://www.tad.org/Datasearch/datasearch.htm">http://www.tad.org/Datasearch/datasearch.htm</a>		
3. <a href="http://www.tad.org/Datasearch/re_location_search.cfm">http://www.tad.org/Datasearch/re_location_search.cfm</a>		
4. <a href="http://www.tad.org/Datasearch/re.cfm">http://www.tad.org/Datasearch/re.cfm</a>		
5. <a href="http://www.tad.org/Datasearch/relocation.cfm">http://www.tad.org/Datasearch/relocation.cfm</a>		
	3,007	0.64%
1. <a href="http://www.tad.org/Datasearch/exemptionRates.cfm">http://www.tad.org/Datasearch/exemptionRates.cfm</a>		
	2,535	0.54%
1. <a href="http://www.tad.org/Datasearch/re_location_search.cfm">http://www.tad.org/Datasearch/re_location_search.cfm</a>		
2. <a href="http://www.tad.org/Datasearch/relocation.cfm">http://www.tad.org/Datasearch/relocation.cfm</a>		
3. <a href="http://www.tad.org/Datasearch/re.cfm">http://www.tad.org/Datasearch/re.cfm</a>		
	2,496	0.53%
1. <a href="http://www.tad.org/Datasearch/reowner.cfm">http://www.tad.org/Datasearch/reowner.cfm</a>		
	2,375	0.51%
1. <a href="http://www.tad.org/datasearch/hsTestjscookie.cfm">http://www.tad.org/datasearch/hsTestjscookie.cfm</a>		
	2,186	0.47%
1. <a href="http://www.tad.org/Datasearch/relocation.cfm">http://www.tad.org/Datasearch/relocation.cfm</a>		
2. <a href="http://www.tad.org/Datasearch/re.cfm">http://www.tad.org/Datasearch/re.cfm</a>		
	2,122	0.45%
1. <a href="http://www.tad.org/Datasearch/datasearch.htm">http://www.tad.org/Datasearch/datasearch.htm</a>		
	2,063	0.44%
1. <a href="http://www.tad.org/Datasearch/datasearch.htm">http://www.tad.org/Datasearch/datasearch.htm</a>		
2. <a href="http://www.tad.org/Datasearch/re_location_search.cfm">http://www.tad.org/Datasearch/re_location_search.cfm</a>		
3. <a href="http://www.tad.org/Datasearch/relocation.cfm">http://www.tad.org/Datasearch/relocation.cfm</a>		
4. <a href="http://www.tad.org/Datasearch/re.cfm">http://www.tad.org/Datasearch/re.cfm</a>		
	1,753	0.37%
1. <a href="http://www.tad.org/Datasearch/re.cfm">http://www.tad.org/Datasearch/re.cfm</a>		
2. <a href="http://www.tad.org/Datasearch/re_powner.cfm">http://www.tad.org/Datasearch/re_powner.cfm</a>		

# Activity Dashboard

This displays key graphs and tables that provide an overview of the Activity chapter. Click on the title of a graph or table to navigate to the corresponding page.

**Visits by Hour of the Day**



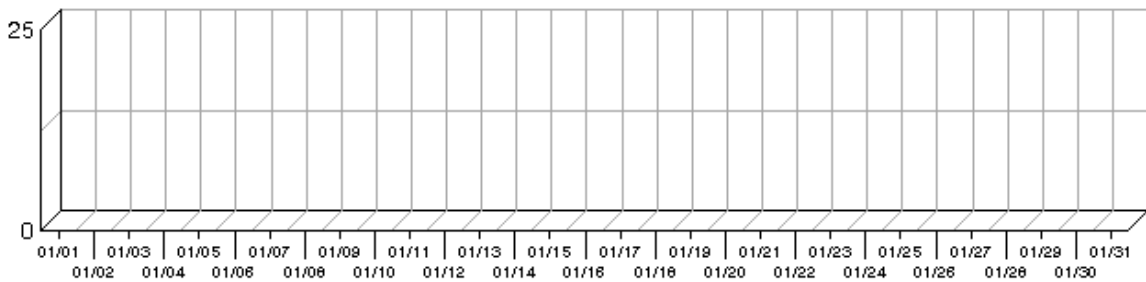
**Most Active Summary**

Most Active Date	January 15, 2008
Number of Hits on Most Active Date	875,892
Most Active Day of the Week	Wed
Most Active Hour of the Day	11:00–11:59

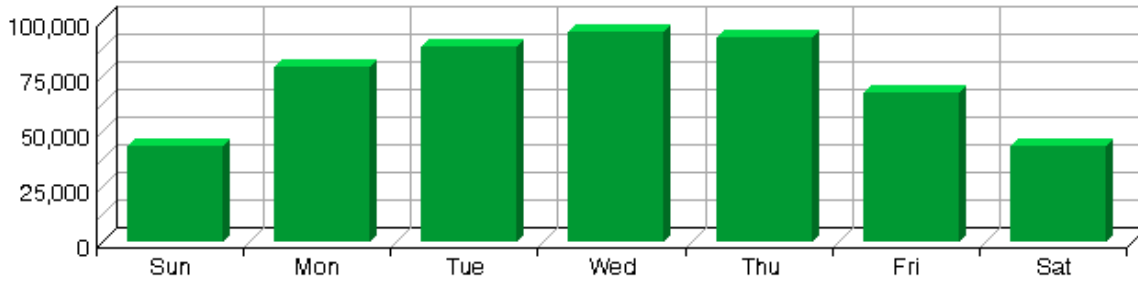
**Activity on Weekdays Summary**

Total Hits Weekdays	13,682,962
Total Visits Weekdays	421,919
Average Number of <b>Visits</b> per day on Weekdays	18,344
Average Number of <b>Hits</b> per day on Weekdays	594,911

**Average Time to Serve Pages**



**Visits by Day of the Week**



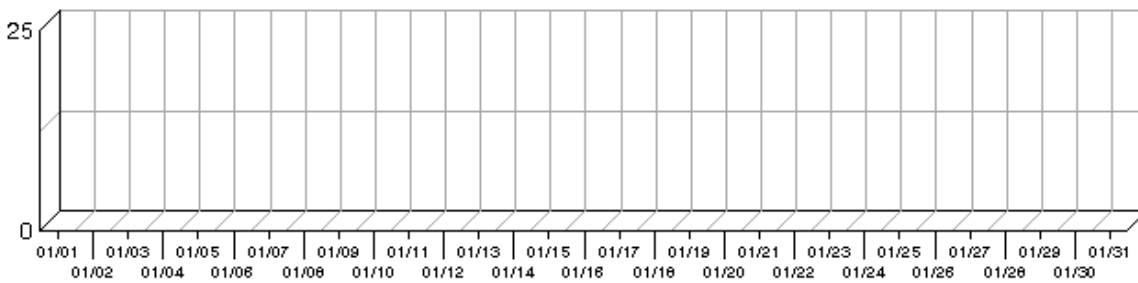
**Least Active Summary**

Least Active Date	January 01, 2008
Number of Hits on Least Active Date	182,803
Least Active Day of the Week	Sun
Least Active Hour of the Day	04:00–04:59

**Activity on Weekends Summary**

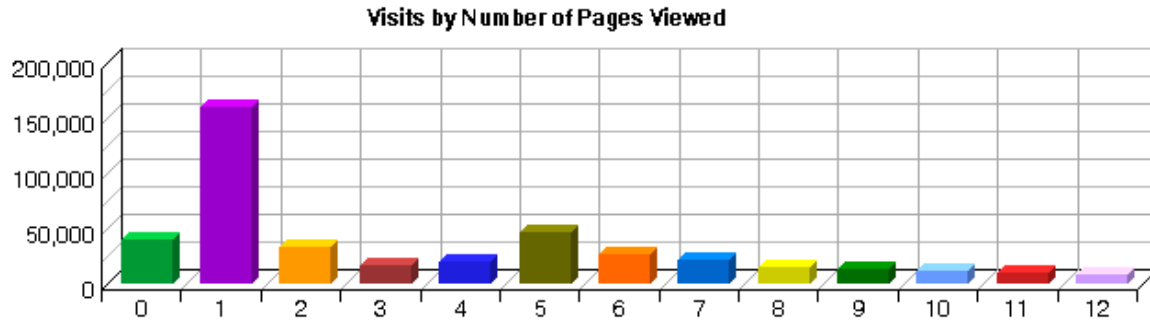
Total Hits Weekend	1,969,454
Total Visits Weekend	86,291
Average Number of <b>Visits</b> per Weekend	21,572
Average Number of <b>Hits</b> per Weekend	492,363

**Bandwidth: Kbytes Transferred Trend**



# Visits by Number of Pages Viewed

This report shows you how many times visitors viewed one page, how many viewed two pages, etc.



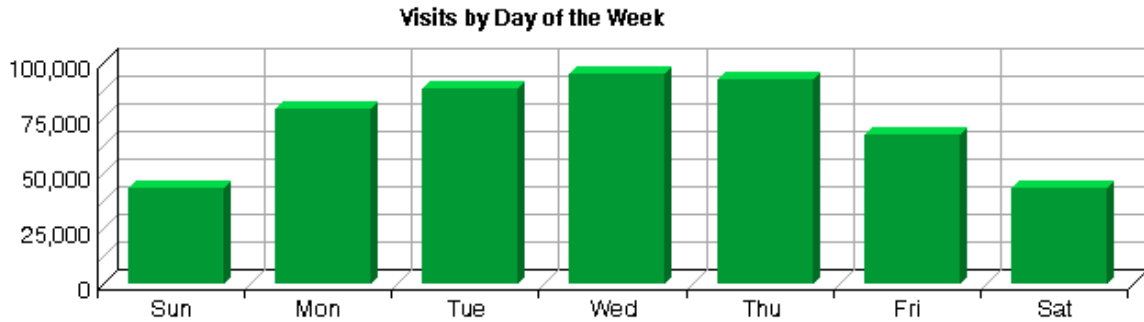
**Visits by Number of Pages Viewed**

Number of Pages Viewed	Visits	%
0	39,214	7.72%
1	159,369	31.37%
2	33,577	6.61%
3	17,204	3.39%
4	19,187	3.78%
5	45,920	9.04%
6	26,319	5.18%
7	22,060	4.34%
8	14,956	2.94%
9	14,144	2.78%
10	11,877	2.34%
11	10,095	1.99%
12	8,588	1.69%
<b>Subtotal</b>	<b>422,510</b>	<b>83.18%</b>
<b>Other</b>	<b>85,459</b>	<b>16.82%</b>
<b>Total</b>	<b>507,969</b>	<b>100.00%</b>



# Visits by Day of the Week

This report shows the activity for each day of the week within the reporting period. Unsuccessful hits are not included.



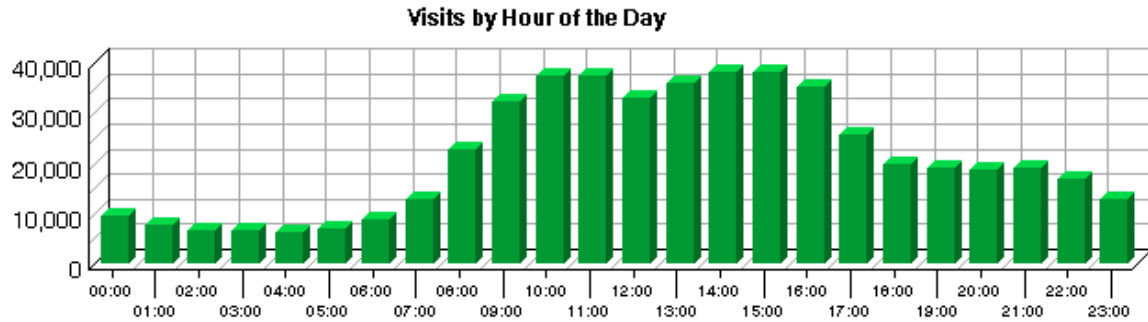
Visits by Day of the Week

Day	Visits	%
Sun	42,945	8.45%
Mon	79,151	15.57%
Tue	88,212	17.36%
Wed	94,721	18.64%
Thu	92,327	18.17%
Fri	67,508	13.28%
Sat	43,346	8.53%
<b>Total Weekend</b>	<b>86,291</b>	<b>16.98%</b>
<b>Total Weekdays</b>	<b>421,919</b>	<b>83.02%</b>
<b>Total</b>	<b>508,210</b>	<b>100.00%</b>



# Visits by Hour of the Day

This report shows activity for each hour of the day. It also shows the most and the least active hours of the day for the report period.



Visits by Hour of the Day

Hour	Visits	%
00:00	9,519	1.87%
01:00	7,693	1.51%
02:00	6,628	1.30%
03:00	6,557	1.29%
04:00	6,392	1.26%
05:00	6,977	1.37%
06:00	8,644	1.70%
07:00	12,843	2.53%
08:00	22,707	4.47%
09:00	32,388	6.37%
10:00	37,289	7.34%
11:00	37,578	7.39%
12:00	33,137	6.52%
13:00	35,982	7.08%
14:00	38,126	7.50%
15:00	38,043	7.49%
16:00	35,048	6.90%
17:00	25,838	5.08%
18:00	19,847	3.91%
19:00	19,060	3.75%
20:00	18,848	3.71%
21:00	19,231	3.78%
22:00	16,829	3.31%
23:00	13,006	2.56%
<b>Total Visits during Work Hours (8:00am–5:00pm)</b>	<b>310,298</b>	<b>61.06%</b>

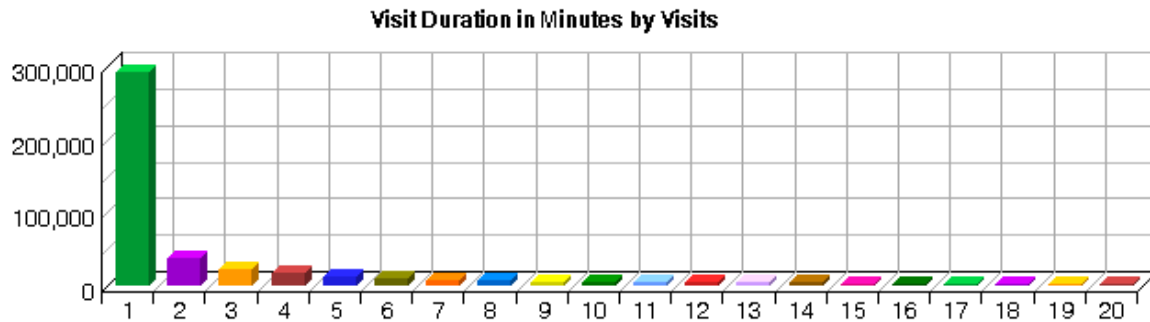
<b>Total Visits during After Hours (5:01pm–7:59am)</b>	<b>197,912</b>	<b>38.94%</b>
<b>Total</b>	<b>508,210</b>	<b>100.00%</b>

**Summary of Visits by Hour of the Day**

<b>Most Active Hour of the Day</b>	14:00–14:59
<b>Least Active Hour of the Day</b>	04:00–04:59

# Visit Duration by Visits

This report shows the number and percentages of visits over selected visit lengths.



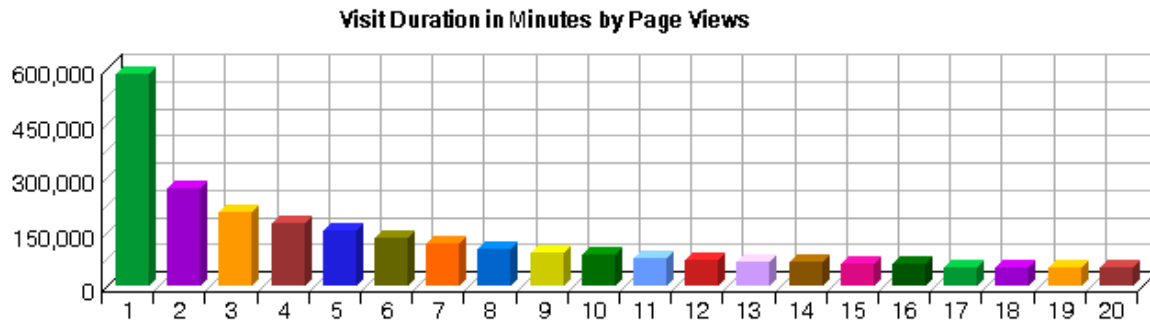
**Visit Duration by Visits**

Visit Duration in Minutes	Visits	%
0-1	292,153	57.51%
1-2	38,902	7.66%
2-3	23,697	4.67%
3-4	16,926	3.33%
4-5	13,181	2.59%
5-6	10,608	2.09%
6-7	8,762	1.72%
7-8	7,193	1.42%
8-9	6,247	1.23%
9-10	5,622	1.11%
10-11	4,994	0.98%
11-12	4,684	0.92%
12-13	4,200	0.83%
13-14	3,926	0.77%
14-15	3,585	0.71%
15-16	3,323	0.65%
16-17	3,172	0.62%
17-18	2,932	0.58%
18-19	2,753	0.54%
19-20	2,715	0.53%
<b>Subtotal</b>	<b>459,575</b>	<b>90.47%</b>
<b>Other</b>	<b>48,394</b>	<b>9.53%</b>
<b>Total</b>	<b>507,969</b>	<b>100.00%</b>



# Visit Duration by Page Views

This report shows the number and percentages of pages views over selected visit lengths.



**Visit Duration by Page Views**

Visit Duration in Minutes	Views	%
0-1	586,593	13.82%
1-2	269,900	6.36%
2-3	205,643	4.85%
3-4	171,601	4.04%
4-5	151,173	3.56%
5-6	131,208	3.09%
6-7	116,617	2.75%
7-8	101,249	2.39%
8-9	91,341	2.15%
9-10	85,652	2.02%
10-11	78,296	1.84%
11-12	73,585	1.73%
12-13	67,917	1.60%
13-14	64,986	1.53%
14-15	59,904	1.41%
15-16	58,775	1.38%
16-17	53,159	1.25%
17-18	49,907	1.18%
18-19	49,518	1.17%
19-20	48,385	1.14%
<b>Subtotal</b>	<b>2,515,409</b>	<b>59.27%</b>
<b>Other</b>	<b>1,728,872</b>	<b>40.73%</b>
<b>Total</b>	<b>4,244,281</b>	<b>100.00%</b>

