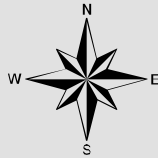


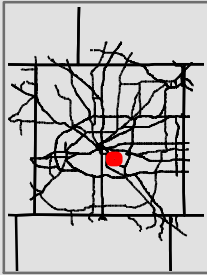


- Legend**
- Deeds\_Boundary
  - RECORDBOUNDARYTYPE
  - Parcel Line
  - Parcel Split Line
  - Private Road
  - ROW
  - Unknown
  - HistoricLot
  - School
  - City
  - Abstracts
  - County
  - Water\_District

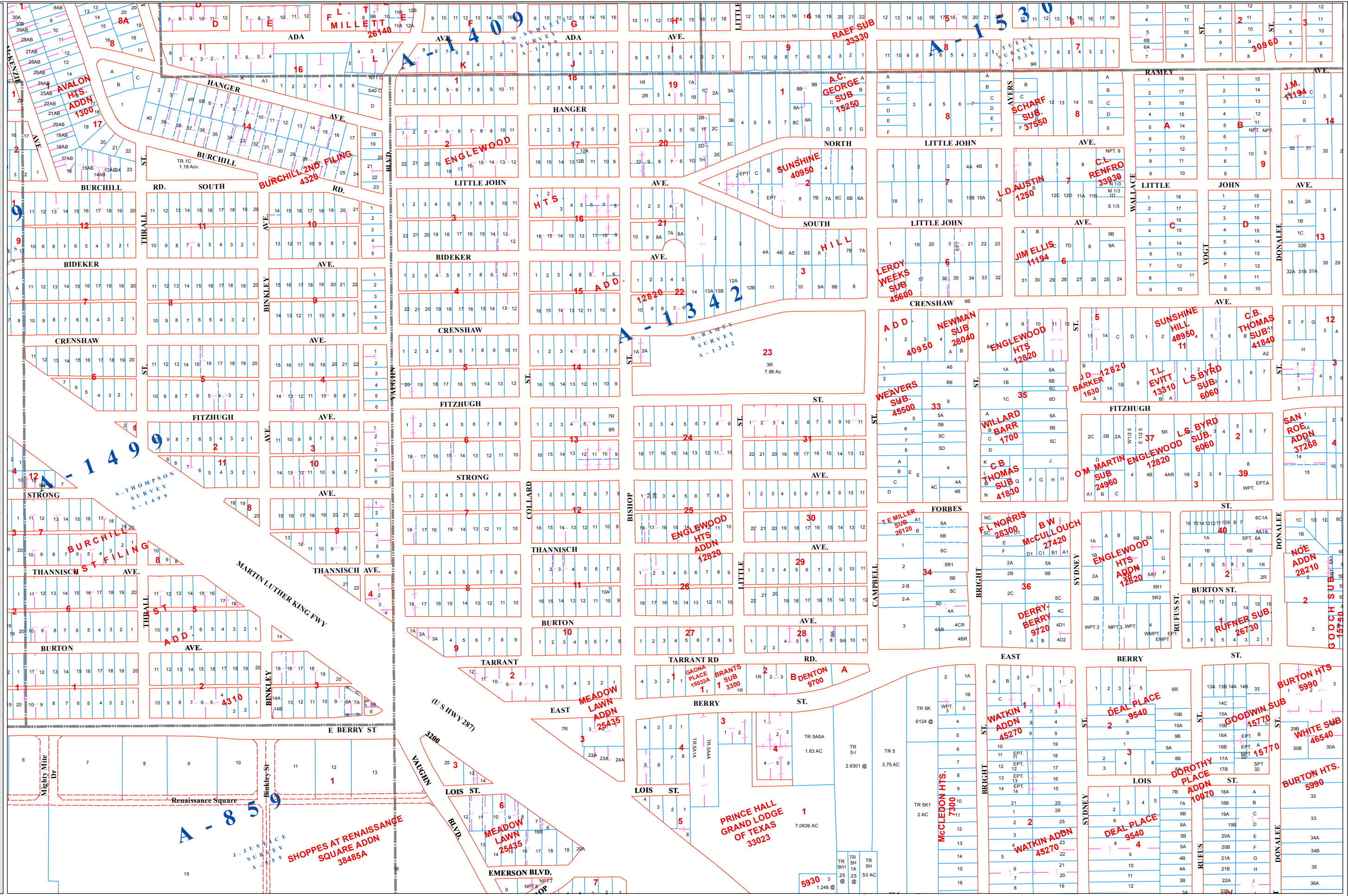


Map created on:  
4/2/2012

1 inch = 400 feet



\* map location



This product is for informational purposes and may not have been prepared for or be suitable for legal, engineering, or surveying purposes. It does not represent an on-the-ground survey and represents only the approximate relative location of property boundaries.